

## SCREENS

### ELEGANT WINDOWS SHADING

Vertical façade awnings are the latest trend in shading. Not only do they shade well, but thanks to a large range of fabric and construction colours, they look great and give a modern look to any facade on the building. You can choose from a wide range of systems and fade-resistant, good quality fabrics.

Everything made to measure and with a 4-year warranty.

# SCREENS

## Types of vertical screens



Protects against sun  
and reduces heat.



Gives facade  
a modern look.



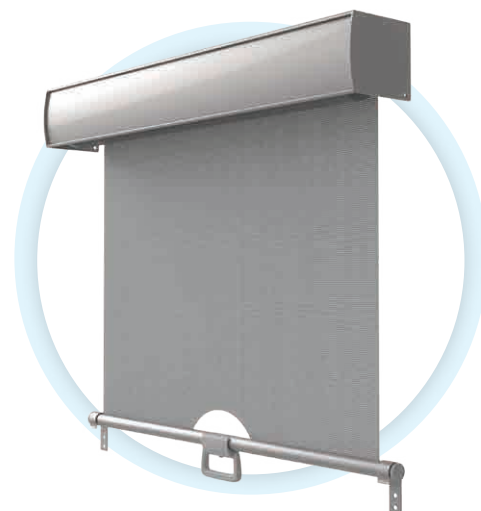
Allows to both shade  
and ventilate at the  
same time with the  
window open.



Increases  
privacy



UNIROL



SUNROL



V-ROL



## Types of guiding the fabric

We offer 3 basic ways of guiding the fabric, in a wire, guide rail or ZIP system.



Detail of guiding in a wire



Detail of guiding in a guide rail

Thanks to the zip, which is welded on both sides of the fabric, wind resistance is increased.

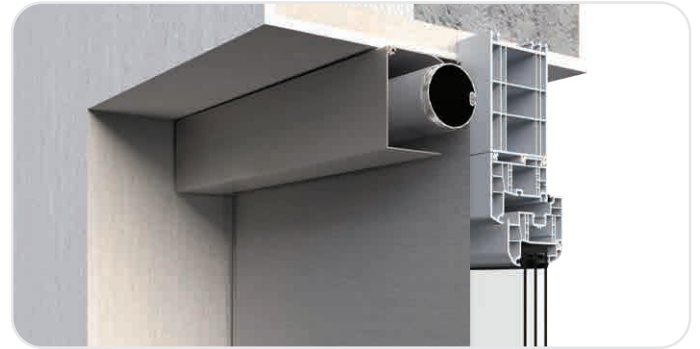


Detail of guiding in a zip

## Types of installation

### Visible box

If you have a chance to place the box into the cassette under the facade, it's always an ideal solution.



### Under-the-facade cassette

The vertical awning, when pulled up, hides in a hidden cassette and does not interfere with the window brightness. Thanks to the welded guide rail and ZIP design you achieve an undisturbed facade appearance.



## Types of fabric

**In our offer, you will find all shades that correspond to modern trends. You have the opportunity to choose from both soft tones and rich colours so that you are pleased with the final look of your house.**

### Screen fabrics (fiberglass and PVC)

The fabric consists of 42% fiberglass, which is coated in 58% PVC. Thanks to that, the dimensional stability, fire protection and also protection against chemicals are guaranteed. The fabric provides UV stability and excellent resistance against weather conditions. Screen fabrics offer not only excellent shade and prevent heat from penetrating inside, but at the same time they keep the streaking out.

### Black-out fabrics

It is a fabric with a special layer, which does not let sunlight through and it also reduces the heat. It serves well to darken rooms. They are therefore a popular choice mainly for offices, schools or projection rooms. In short everywhere as much darkness as possible is needed.



### Perforated fabrics (Soltis)

These fabrics are suitable for both interior and exterior use. They are distinguished by high strength, high and low temperature resistance and humidity. They are non-flammable, antiallergic and colour stable. They have great heat insulation properties and can retain up to 90% of heat radiation. They also contribute to savings on air conditioning. Thanks to the perforation, these screens as well as screen fabrics, prevent heat from penetrating into the interior while maintaining a view to the outside.



## Acrylic fabrics

They are impregnated so that water drains from it easily. If the fabric get wet, it is necessary to let it dry out thoroughly. These fabrics are characterized by high processing quality, UV protection and colour durability.



## Control types

Motorised – 230 V electric motor or 12 V solar-powered electric motor with control options:

- switch
- automatic controls (solar and wind sensor)
- remote control
- smart mobile device (Tahoma system)

Manual:

- crank with gearbox

## Resistance class

### Beaufort wind scale

Resistance class against the wind	Beaufort scale	Wind speed (km/h)	Wind type	Wind characteristics
0	0	0 to 1	calm	Smoke rises vertically.
	1	2 to 5	light air	Direction shown by smoke drift.
	2	6 to 11	light breeze	Wind felt on face, leaves rustle.
	3	12 to 19	gentle breeze	Leaves and small twigs in constant motion.
1	4	20 to 28	moderate breeze	Moderate breeze - raises dust and loose paper, small branches sway.
2	5	29 to 38	fresh breeze	Small trees sway.
3	6	39 to 49	strong breeze	Large branches in motion, whistling heard in telegraph wires, umbrellas used with difficulty
4	7	50 to 61	high wind	Whole trees in motion, walking against the wind becomes difficult.
5	8	62 to 74	gale	Twigs break off trees.
6	9	75 to 88	strong gale	Slight structural damage (pulling chimneys, slates removed).
-	10	89 to 102	storm	Rarely happens inland, trees uprooted, considerable structural damage.
	11	103 to 117	violent storm	Violent storm - widespread damage.
	12	nad 118	hurricane force	Devastation, houses collapse.

## Wind resistance

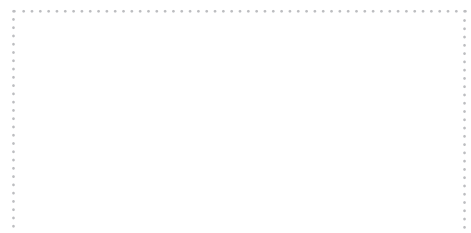
Product type	Max. Width (cm)	Max. Height (cm)	Max. area (m <sup>2</sup> )	Resistance class
SUNROL	240	250	3.00	2
UNIROL 80 C UNIROL 80 R	150	100	1.50	6
	250		2.50	5
	300		3.00	4
	100	150	1.50	6
	200		3.00	5
	300		4.50	4
	150		3.00	5
	250	200	5.00	4
300	6.00		3	
UNIROL 80 Z	300	200	6.00	6
UNIROL 100 C UNIROL 100 R	150	100	1.50	6
	250		2.50	5
	400		4.00	4
	100	150	1.50	6
	200		3.00	5
	330		4.95	4
	400		6.00	3
	150	200	3.00	5
	250		5.00	4
	350		7.00	3
	400		8.00	2
	100	250	2.50	5
	200		5.00	4
	300		7.50	3
	350		8.75	2
	150	300	4.50	4
	250		7.50	3
	300		9.00	2
100	350	3.50	4	
200		7.00	3	
250		8.75	2	

Product type	Max. Width (cm)	Max. Height (cm)	Max. area (m <sup>2</sup> )	Resistance class
UNIROL 100 Z	330	300	6.75	6
	400		9.00	4
UNIROL 130 Z	450	450	9.76	6
	450		14.46	5
UNIROL 150 Z	500	500	18.00	4
	550		9.76	6
UNIROL 110 ZU	550	350	14.46	5
	600		18.00	4
V-ROL 63	330	350	8.00	5
	330		8.00 - 10.00	4
V-ROL 63	330	350	10.00 - 14.00	3
	330		7.00	3
V-ROL 63	330	350	7.10 - 9.00	2





For more information go to [www.servisclimax.eu](http://www.servisclimax.eu)



Your CLIMAX partner:

The data given in this material is purely informative. For more details on design options of this product and other products of SERVIS CLIMAX a.s., please contact our nearest business partner. You will find the complete offer, including technical support, on the website [www.servisclimax.eu](http://www.servisclimax.eu)